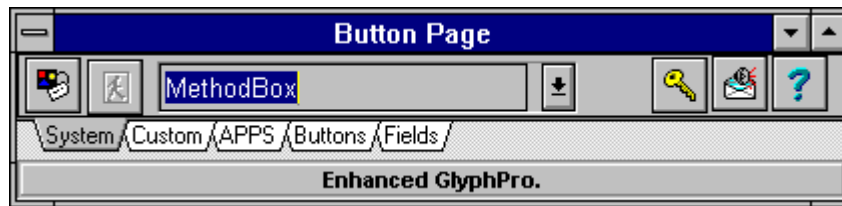


# Button Page 1.0v



## Introduction

### Installation

What Does The Install Program Do?

Starting Button Page

Personal Notes

Un-installing The Button Page

## System Page

### Glyph Manager

Glyph Manager Settings

Activating The Glyph Manager

Settings

Method Box

## Components

Creating A Component

Storing A Component

Creating A Group Component

Storing A Group Component

Editing Components

Sorting Components

Removing Buttons

## Project Manager

Storing A Project

Executing A Project

Editing A Project

Sorting A Project

Removing Project Buttons

## Pages

Creating A Page

Removing A Page

Save Settings

## TroubleShooting

Common Problems

## Contacting Me

## Introduction

Though I had several reasons to write this utility, my main motivation was to provide a much easier way of creating forms on the fly (just speeding up the entire process of form creation was a great load off my work load). My early experiments through experts showed that it was becoming a cumbersome task. So after studying how the IDE worked I found it was easier to wrap everything into a component but streamlined into the Form Design. I won't go into detail on exactly on how I went about the whole process that my little secret.. But I am open to new ideas and enhancements to the product, the product alone has saved me heaps time in general development of applications.

[Installation](#)

[What Does The Install Program Do?](#)

[Starting Button Page](#)

[Personal Notes](#)

[Un-installing The Button Page](#)

## **Installation**

- 1) Unzip PP.Zip into a temp directory
- 2) Run Install.exe
- 3) Enter the paths that are requested.  
Note. Try and keep them the same for ease of installation.
- 4) From Delphi, choose Options|Install Components...
- 5) Choose Add from the install dialog, then choose Browse
- 6) Go to the directory where you installed pp.dcu and choose PP.DCU
- 7) Choose OK
- 8) Choose OK again (at the install dialog)
- 9) The Button Page should be now be completely installed.

### Introduction

## **What does the Install Program Do?**

The installation program basically copies the files into the correct directories and setups the internal hooks into the IDE for usage. Note, if you have to reinstall Delphi then you will have to reinstall the application to re-establish the internal links. (See TroubleShooting if you have problems)

Introduction

## **Starting Button Page**

The button page automatically starts up when Delphi starts or when you rebuild the Component library.

[Introduction](#)

## **Personal Note.**

As Button Page is constantly open on my desktop I generally never close it and if Delphi minimises so does Button Page so I find that I don't have a need to close it down and open it backup. But if you do, I have a separate program that is Hooked into the Tools menu. Click on this and it will start it up.

[Introduction](#)

## Un-installing Button Page

To un-install the Button Page perform the following steps.

- 1) Remove the PP.DCU file out of the Component Library
- 2) Rebuild Library.
- 3) File List  
Remove these files (delete them)

C:\windows\pp001.ini  
bpcomp.dat - Component Storage File  
bpcode.dat - Component Code Storage File (not all versions have this file)  
~bpcomp.str - Temp file this file can be deleted at any time.  
bp.dll - DLL  
pp.dcu - Unit File  
pp.dfm - form file  
pp.res - Resource file  
pp.hlp - Help File

Introduction

## Components

[Creating A Component](#)

[Storing A Component](#)

[Creating A Group Component](#)

[Storing A Group Component](#)

[Editing Components](#)

[Sorting Components](#)

[Removing Buttons](#)



## Creating a Component



**Figure 1 - Component Page**

Find a component that you want to create.

Make sure you have a designing form in focus.

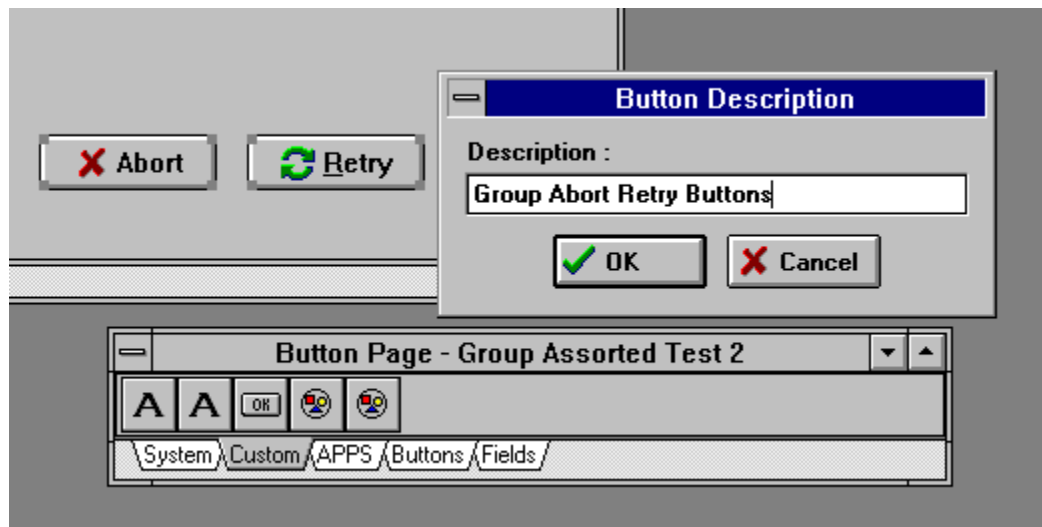
Click on the component to create it on the form and it will appear on the designing form. If it doesn't appear then chances are that has put it into the clipboard.

A component can be created onto a designing form or the clipboard depending on the settings dialog (off the system page). It is possible that you created the component on the form and you just can't see it, that is, it could be off the main designing form's visible range or it could be under another object. Use the object inspector to adjust its positioning.

Not all components are supported in the creation process but the majority are, if you come across one that is not created properly, please let me know.

[Components](#)

## Storing a Component



**Figure 2 - Storing a new component**

Select the component/s you want to save on the designing form.

Note. More than one component can be saved at one time, have a look at the Date Box example.

Select the component page you want to it to save on.

Right click on the page and select **Insert Button**

Enter a Description in the Description Dialog, this description will be displayed when you drag the mouse over the button.

Upon pressing OK, the new component will be stored on the selected component page.

Note. There two type of pages, a Component Page and a Project Page.

Components

## Creating a Group Component

Find a group component that you want to create.

Make sure you have a designing form in focus.

Click on the component to create it on the form and it will appear on the designing form. If it doesn't appear then chances are that has put it into the clipboard.

With a group of components any child components will be automatically assigned to their parent. Also watch in testing if components hide under each especially if you are using panels. Any non-visual components are always stacked on top of each other and will need to be separated. (if this is an issue please let me know)

A component can be created onto a designing form or the clipboard depending on the settings dialog (off the system page). It is possible that you created the component on the form and you just can't see it, that is, it could be off the main designing form's visible range or it could be under another object. Use the object inspector to adjust its positioning.

Not all components are supported in the creation process but the majority are, if you come across one that is not created properly, please let me know.

### Components

## Storing a Group Component

Select the components you want to save on the designing form.

When selecting components, remember the first selection is generally the first component that will be created on retrieval, so if a TBevel is to have a TLabel on top of it, then Select the TBevel first and the TLabel second.

Parenting components are taken care of and upon creation of grouped components, parent linkages are reestablished.

Select the component page you want to it to save on.

Right click on the page and select **Insert Button**

Enter a Description in the Description Dialog, this description will be displayed when you drag the mouse over the button.

Upon pressing OK, the new component will be stored on the selected component page.

Note. There two type of pages, a Component Page and a Project Page.

### Components

## **Editing the Component Button**

Right click on a button and select Edit Properties.

A Description dialog will appear. Change the Description to whatever you want it to be.

Components

## Sorting Components

Right Click on a page. Select **Change Positions** from the menu.

Use the dialog listbox to rearrange the buttons how you wish, using drag and drop techniques

Click on OK to save settings.

Components

## Removing Buttons

Right Click on a button. Select **Remove Button** from the menu.

The removal of the button removes it from the INI file, but it is still stored in the database until rebuild is selected. (Settings Dialog).

Components

## Project Manager



- Storing A Project
- Executing A Project
- Editing A Project
- Sorting A Project
- Removing Project Buttons



## Storing a Project

Select a Project page to use to store your project.

Right click on the page and select **Insert Button**.

In the Description Dialog, on the first line, enter the description that you want displayed.

On the second line, press **Ctrl-Space** or click the button to the right of that field, to bring up a browse dialog. Use the dialog to find the \*.dpr file, you want to be saved.

Project Manager

## **Executing a Project**

Selecting a Project Button will close down the current project (prompt for saving if modified).

Open the new project.

Project Manager

## **Editing a Project**

Right click on the a project button.

A description dialog will popup and enter the new description. (See Storing Project.)

Project Manager

## Sorting Projects

Right Click on a page and select **Change Positions** from the menu.

Use the dialog listbox to rearrange the buttons how you wish, using drag and drop techniques

Click on OK to save settings.

Project Manager

## Removing Buttons

Right Click on a button and select **Remove Button** from the menu.

The removal of the button removes it from the INI file but it is still stored in the database until rebuild is selected. (Settings Dialog).

Project Manager

## System Page

[Glyph Manager](#)

[Glyph Manager Settings](#)

[Activating The Glyph Manager](#)

[Settings](#)

[Method Box](#)

## Glyph Manager



Glyph Manager provides the ability to view buttons glyphs. From their directories, select the glyph you want and apply it to a selected TSpeedbutton or TBitBtn on a designing form.

Use the Page Up and Page Down keys to browse the pages of glyphs.

To apply a glyph select the glyph that you want, then respond to the Apply Dialog.

If a TSpeedButton or a TBitBtn has been selected on the designing form, then the glyph will be inserted into the button.

On the system page, the **apply button** will not be enabled to allow repetitive selection into other buttons. (Remembers the last glyph selected)

The directory field allows you to enter a new directory and press Enter, or click on the Refresh button to change to new directory.

To store extra directories, add directories in the settings dialog.

[Glyph Manager Settings](#)

[System Page](#)

## Glyph Manager Settings



The directory list shows the available directories that the glyph manager can be changed to.

To add more directories, click on the Add button.

To Remove Directories, click on the Remove button.

The button size field represents the size of the displaying buttons.

The Number of glyph's field, shows how many glyphs are in one bitmap. Usually a bitmap contains two glyphs, these being one for active and one for disabled.

Glyph Manager



## Activating Glyph Manager

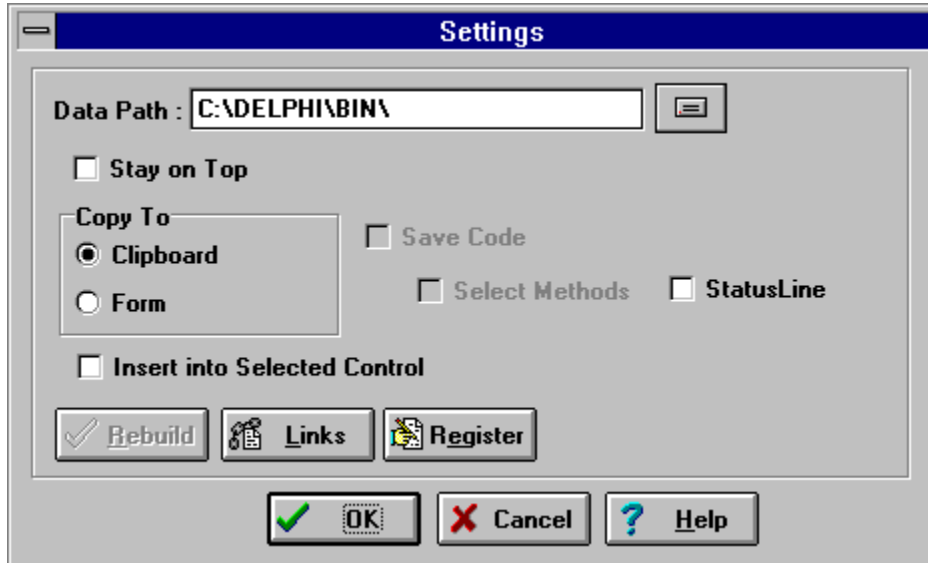


Clicking on this button will activate the glyph manager.

The button to the right of the glyph manager button, remembers the last glyph selected, to reapply the glyph to a TSpeedButton or a TBitBtn that has been selected on a designing form.

[System Page](#)

## Settings



This page is in a bit of turn as I generally build more options into the program.

Generally this page allows the turning on and off of options.

Datapath - Directory of the storage BPComp.dat BPCode.Dat file (leave as is).

StayOnTop - Puts the form into stay on top mode.

Copy To - Clipboard, paste any created components into the clipboard  
- Form, show the created component on the form.

StatusLine - on displays a status line on the bottom of the form  
- off any hints are displayed in the forms caption area.

Links - Reestablish internal links into the IDE only needed if replace system libraries.

Registration - Click here for the entry of your name a registration number.

[System Page](#)

## **Method Box**

Unfortunately the Method box is nothing more than a Search control at the moment.

I was unable to finish it for this version.

It will be set to work exactly like the Visual Basic method list but I am seriously trying to justify its usage in this program.

Any comments will be appreciated.

System Page

## Pages

[Creating A Page](#)  
[Removing A Page](#)  
[Save Settings](#)

## Creating a New Page

Right click on a page and select **New Page**.

Enter the Page name (do not use commas please as they are stripped out).

Select what type of page it is, e.g., Project or Component.

Pages

## Removing a Page

Right click on a page and select **Remove Page**.

Removing a page will delete all associated components on that page.

You can rename a page by selecting the **Change Page Name**

Pages

## **Save Settings**

Saves all the internal settings as well as saving the screen position and width of the form.

Pages

## **TroubleShooting**

Common Problems



## Common Problems

**Q-** I need to reinstall the program but I do not want to lose my settings and components I have stored.

**A-** Execute the install program, when it finds that a PP001.INI exists then it will ask if you want to overwrite it with a new file, answer No and it will not overwrite your data files.

**Q-** When I rebuild my library I get an error Methods do not exist.

**A-** Run the install program again but answer No to overwriting existing ini file.

**Q-** When I create a component it disappears and its not in the clipboard.

**A-** When you store a component, it remembers exactly where it was last time so it is possible that when you saved it last, it is not in the current view of the form, either expand the form to as large as possible or find it in the object inspector and adjust its coordinates. Another possibility is that the component could be under another component i.e. Tpanel or Notebook, I am currently working on an alternative to be able to create components inside a selected component. Unfortunately I have not perfected it yet.

**Q-** Why is it, when I save an OK button it does not remember the OK in the caption.

**A-** This is because Delphi does not mark everything in the properties as modified and when I am storing the component it does not register that it has been change so, to solve this problem adjust any property that you want, save to make sure it has saved it properly.

### TroubleShooting

## Contacting Me

I encourage any and all feedback on Button Page. I will read any correspondence regarding this utility. I only ask that you follow a few simple guidelines when sending feedback. First, be verbose. Describe any problems or feature request in as much detail as possible. Include any information that you think may be valuable code or bitmaps, the version of Delphi you are using, (remember to include file dates and size etc.). If I cannot reproduce your bug, or do not know what you are talking about, I cannot fix the problem. Second, include a method for me to contact you. If you failed in step one, I may need to contact you for more information. If you have an e-mail address, include that. Third, include in the subject/title reference to the type of feedback (if it is a bug report include bug in the title; if it is a feature request, include request in the title; etc.).

**I can be contacted as follows:**

### CompuServe

100026,1274

e-mail: [davidszk@ozemail.com.au](mailto:davidszk@ozemail.com.au)

voice: (63) 0411-245-115

### MAIL

David Szkilnyk

P.O. Box 609,

Glenroy

Victoria, 3046

Australia

## Register

Registering your copy of Button Page will entitle you to the following:

- automatic notice of any new versions
- version without the trial notice and unlock Button Page that it can store unlimited buttons and unlimited pages. The registration will included the ability to store source code with components in their methods (if I have finished it at time of writing this it was almost there)

Also as a bonus I am throwing in the source code to my **MRO (multirecord object)**

Due to time constraints, I was unable to add a scroll bar but it will give you a very interesting insight into how things are done..

**To register, send cheque or money order for \$40.00 (US currency) to:**

David Szkilnyk

P.O. Box 609,

Glenroy

Victoria, 3046

Australia



